



FOR SALE

CH-1544 Gletterens, Route des Grèves 53

HausamSee

CHF 685,000.-



**wymobilien.ch**  
Marcel Wyss

# Table of contents

Location plan	3
Characteristics	4
Conveniences	5
Images	6
Contact	25





# Characteristics

Availability	<b>To agree</b>
Type	<b>Vacation house</b>
Reference	<b>HausamSee</b>
Rooms	<b>3.5</b>
Bedrooms	<b>2</b>
Bathroom	<b>1</b>
Number of toilets	<b>1</b>
Year of construction	<b>1981</b>
Heating type	<b>Electricity</b>

Heating installation	<b>Radiator</b>
Domestic water heating system	<b>Electricity</b>
Construction zone	<b>Geringe Dichte I IBUS 0.6</b>
Condition of the property	<b>Good</b>
Standing	<b>Simple</b>
Living area	<b>~ 60 m<sup>2</sup></b>
Ground surface	<b>~ 739 m<sup>2</sup></b>
Parking places	<b>Yes, obligatory</b>

Object Price	<b>CHF 685,000.-</b>
<b>Number of parkings</b>	
2x Exterior (incl.)	
Local tax	<b>68.90 %</b>
Fiscal value	<b>CHF 171,000.-</b>

# Conveniences

## Neighbourhood

- > Park
- > Green
- > Lake
- > Beach
- > Harbour
- > Residential area
- > Shopping street
- > Restaurant(s)
- > Bus stop
- > Child-friendly
- > Playground
- > Tennis centre
- > Hiking trails
- > Bike trail

## Outside conveniences

- > Terrace/s
- > Garden
- > Exclusive use of garden
- > Bench
- > Quiet
- > Greenery
- > Waterfront
- > Gardenhouse
- > Shed
- > Storeroom
- > Parking
- > Visitor parking space(s)

## Inside conveniences

- > Without elevator
- > Open kitchen
- > Storeroom

## Equipment

- > Fitted kitchen
- > Ceramic glass cooktop
- > Oven
- > Fridge
- > Dishwasher
- > Washing machine
- > Private laundry
- > Shower

## Floor

- > Tiles
- > Laminated
- > Carpet

## Condition

- > To convert
- > In it's current state

## Orientation

- > East
- > West

## View

- > Unobstructed
- > Lake

# Interior view



Wohnen/Essen/Küche



Gestaltungsidee





Zimmer 1



Zimmer 2



Terrasse West

# Exterior view



Terrasse Ost mit Zugang Allzweckraum; heute so



Morgen so?

# Plan

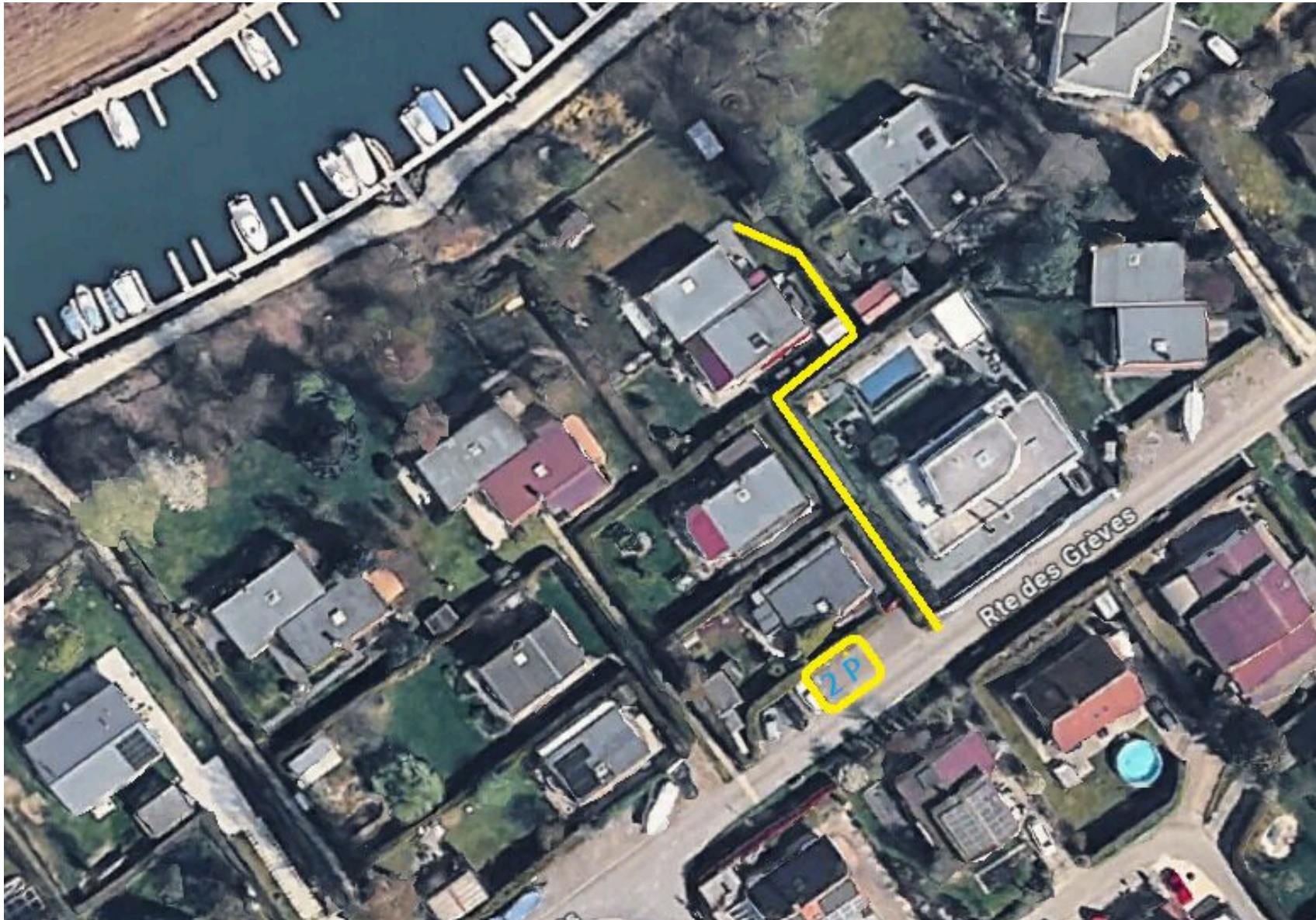


Grundriss Haus

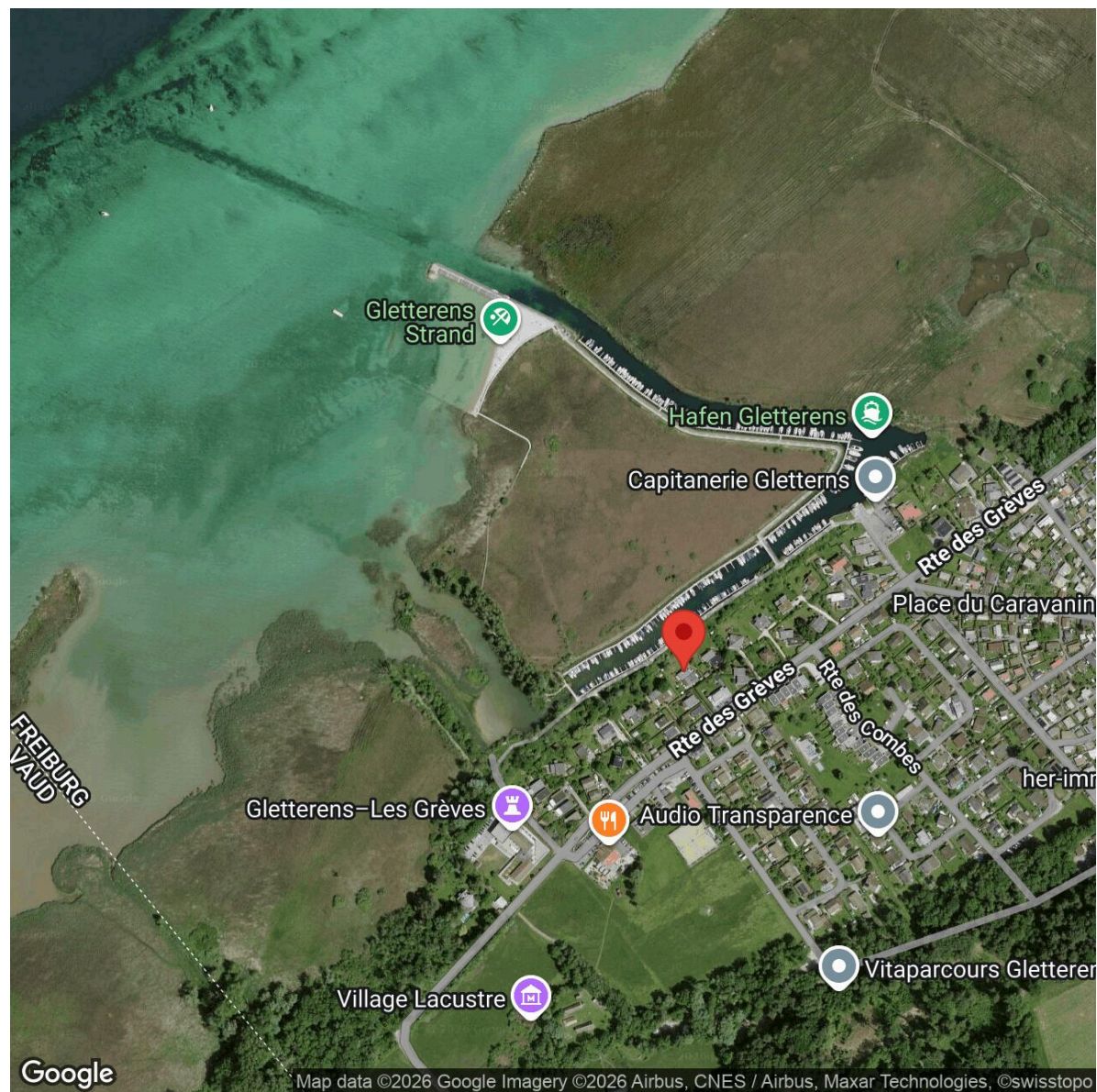


Parzelle Nr. 646 mit 739m<sup>2</sup>

# Exterior view



Die 2 Parkplätze, Fussweg zum Haus (gelb markiert)



Bootshafen/Strand/Volg/Restaurant in unmittelbarer Nähe



Durch den Garten nach 10 Metern am Bootshafen



Vom Bootshafen auf dem Gehweg



über die Brücke zum Sandstrand



Sandstrand Gletterens





Gestalten Sie Ihre persönliche Ruheoase



Herzlich Willkommen in Gletterens

# Contact

## Wymobilien, Marcel Wyss

Hauptstrasse 13  
3422 Kirchberg / Langnau

Phone: 034 511 20 25  
info@wymobilien.ch  
www.wymobilien.ch

## Contact visit

**Mr. Marcel Wyss**  
info@wymobilien.ch  
Phone: 034 511 20 25  
Mob.: 079 545 62 76



# Notes

---

---

---

---

---

---

---

---