

FOR SALE

CH-3422 Kirchberg BE, Fliederweg 16

1090







wymobilien.ch  
Marcel Wyss

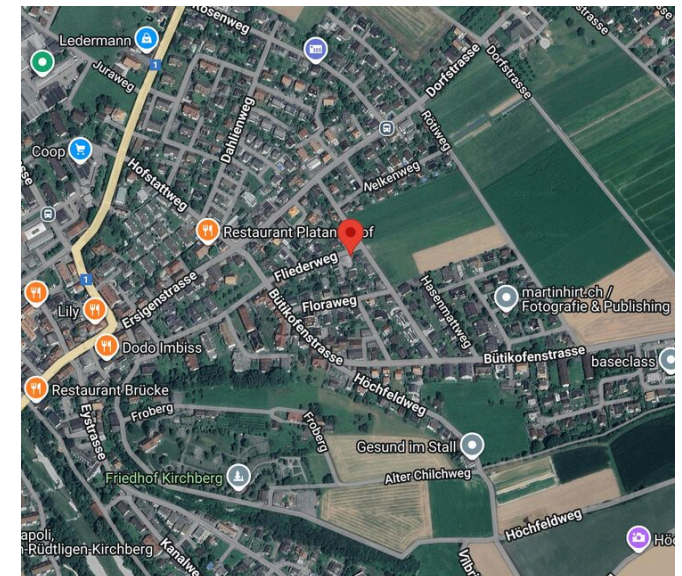
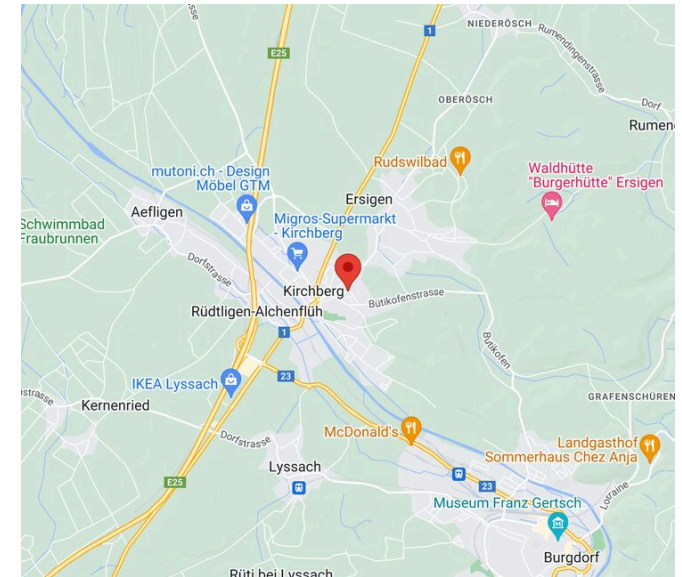
# Table of contents

Location plan	3
Characteristics	4
Conveniences	5
Images	6
Objects table	20
Contact	21



# Location plan

				
Station	<b>753 m</b>	12 min.	12 min.	3 min.
Public transports	<b>172 m</b>	3 min.	-	-
Nursery school	<b>478 m</b>	13 min.	-	3 min.
Primary school	<b>673 m</b>	15 min.	-	3 min.
Secondary school	<b>505 m</b>	10 min.	-	2 min.
Stores	<b>455 m</b>	7 min.	-	-
Post office	<b>508 m</b>	9 min.	-	2 min.
Bank	<b>395 m</b>	7 min.	-	-
Restaurants	<b>228 m</b>	4 min.	-	-



# Characteristics

Availability	<b>To agree</b>	Year of construction	<b>2026</b>
Type	<b>Residential projects</b>	Construction zone	<b>W2</b>
Reference	<b>1090</b>		

# Conveniences

## Neighbourhood

- > Village
- > Green
- > Residential area
- > Shops/Stores
- > Shopping street
- > Bank
- > Post office
- > Restaurant(s)
- > Pharmacy
- > Railway station
- > Railway terminal
- > Bus stop
- > Highway entrance/exit
- > Child-friendly
- > Playground
- > Nursery
- > Preschool
- > Primary school
- > Secondary school
- > Public swimming pool
- > Sports centre
- > Tennis centre
- > Hiking trails
- > Bike trail
- > Doctor
- > Medical home

## Outside conveniences

- > Balcony/ies
- > Terrace/s
- > Exclusive use of garden
- > Bench
- > Quiet
- > Built on even grounds

## Inside conveniences

- > Lift/elevator
- > Garage
- > Open kitchen
- > Cellar
- > Built-in closet
- > Water softener
- > Triple glazing

## Equipment

- > Fitted kitchen
- > Kitchen island
- > Induction cooker
- > Oven
- > Steamer
- > Fridge
- > Dishwasher
- > Washing machine
- > Dryer
- > Private laundry
- > Shower
- > Bath
- > Photovoltaic panels
- > Optic fiber
- > Electric blind
- > Interphone
- > Electric garage door
- > Controlled ventilation
- > Home automation

## Floor

- > At your discretion
- > Tiles
- > Parquet floor
- > Flat

## Condition

- > New

## View

- > Rural

# Exterior view



Ansicht Nordwest mit der Einfahrt in die Einstellhalle



Gartenwohnung West



Gartenwohnung West

# Interior view



Wohnbereich Gartenwohnung West (1090-01)



Küche Gartenwohnung West (1090-01)



Schlafzimmer Gartenwohnung West (1090-01)



Küche/Essen/Wohnen 3.5 OG (1090-05)



Wohnbereich 2.5 OG (1090-04)

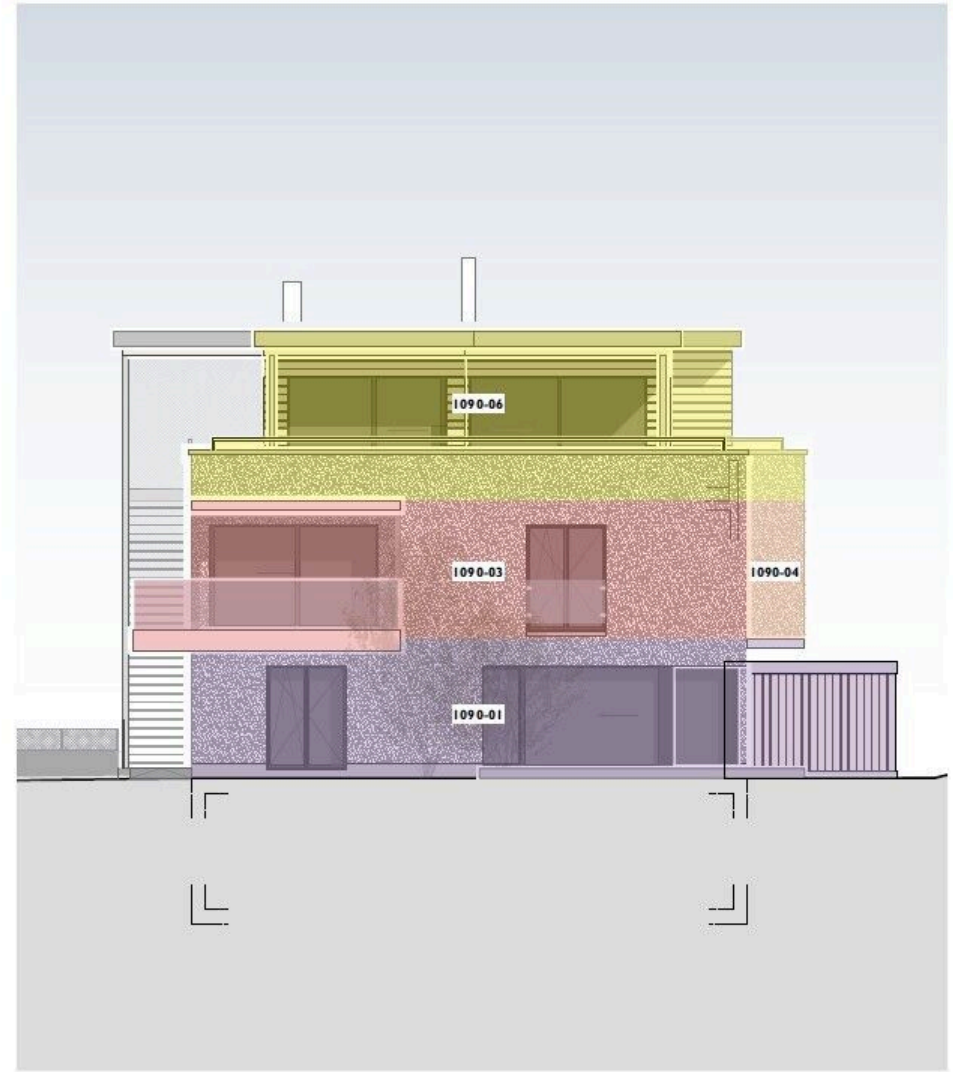
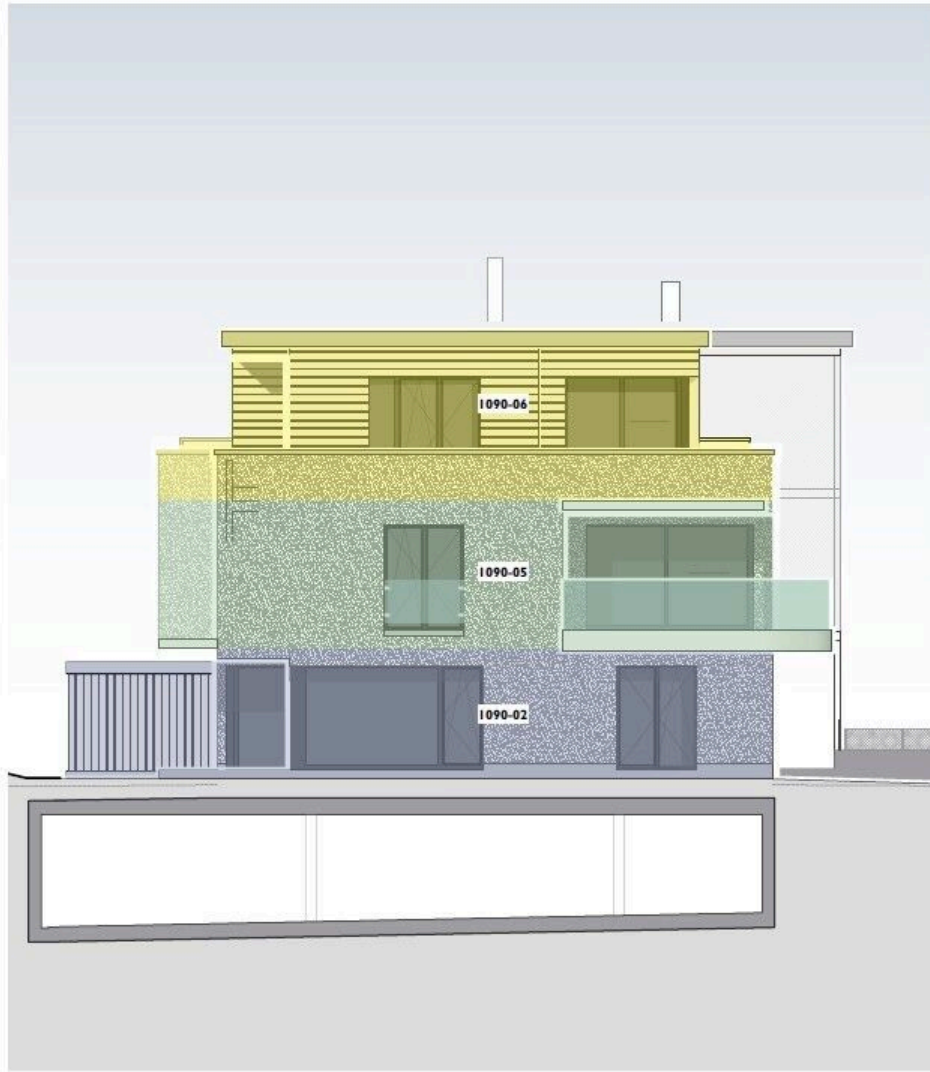
# Plan



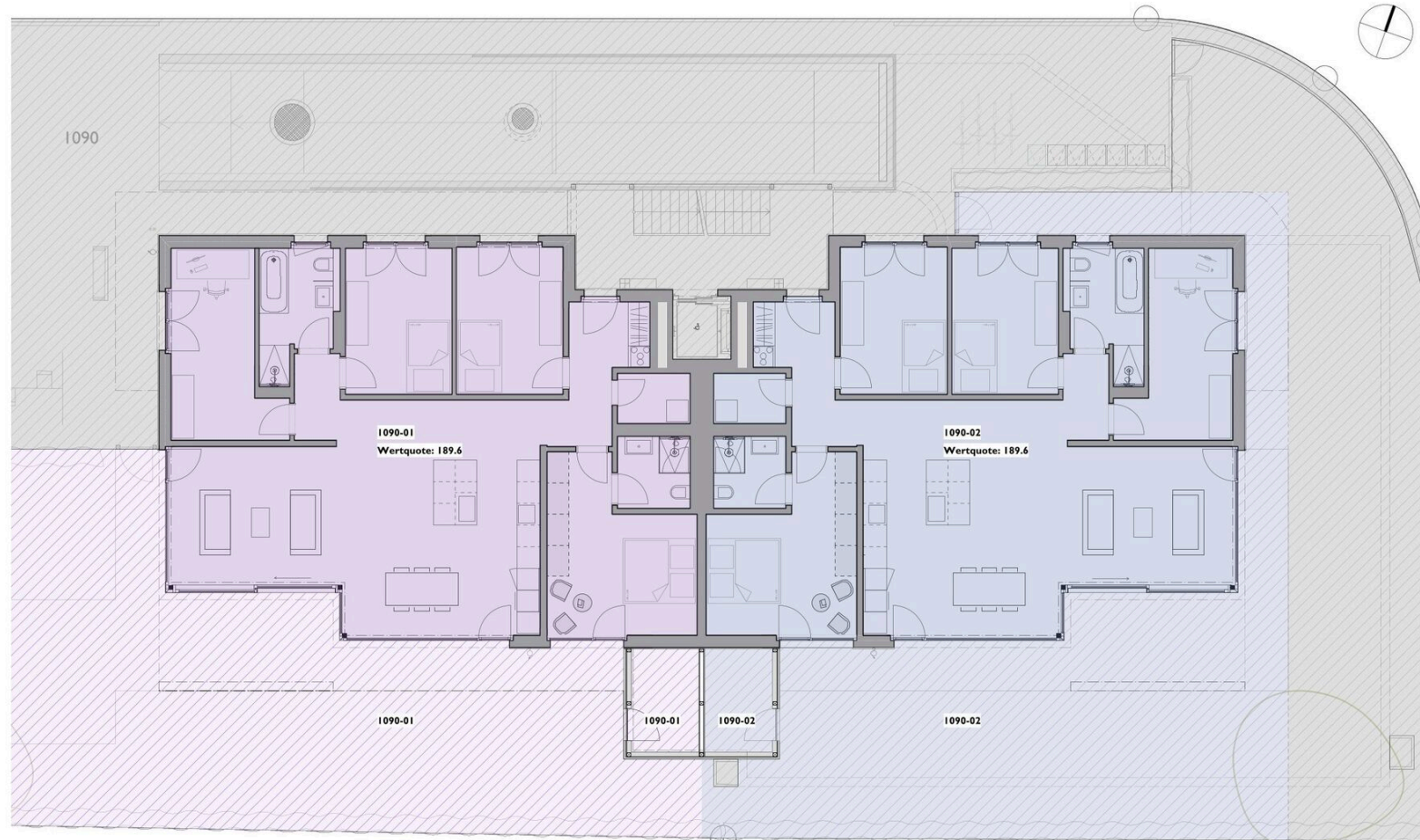
Fassade Süd



Fassade Nord



Fassade Ost/West



**1816**

MFH Fliederweg | Fliederweg 8 | 3422 Kirchberg  
A+G Beteiligungen | Am Bach 5 | 3306 Etzelkofen

**Erdgeschoss**

Stowe | 04.08.2025 | MB  
1:100 | 1816.211 | A3

Grundrisse der Gartenwohnung mit dem jeweiligen priv. Gartenbereich



## 1816

MFH Fliederweg | Fliederweg 8 | 3422 Kirchberg  
A+G Beteiligungen | Am Bach 5 | 3306 Etzelkofen

## Obergeschoss

Stowe | 04.08.2025 | MB  
1:100 | 1816.212 | A3

Grundrisse der 3 Wohnungen im OG



**1816**

MFH Fliederweg | Fliederweg 8 | 3422 Kirchberg  
A+G Beteiligungen | Am Bach 5 | 3306 Etzelkofen

**Untergeschoss**

Stowe | 04.08.2025 | MB  
1:100 | 1816.210 | A3

Untergeschoss

# Objects table

Building	Reference	Deal	Type	Rooms	Number of bedrooms	Number of bathrooms	Floor	Net surface	Useful surface	Cellar surface	Garden surface	Terrace surface	Ceiling height	Price park. int.	Orientation	Price	Status
1090	01	For sale	Condominium apartment	5.5	4	2	Garden floor	134.4 m <sup>2</sup>	303.4 m <sup>2</sup>	13.7 m <sup>2</sup>	95 m <sup>2</sup>	51.4 m <sup>2</sup>	2.41 m	-	South, West	-	Sold
1090	02	For sale	Condominium apartment	5.5	4	2	Garden floor	134.4 m <sup>2</sup>	269 m <sup>2</sup>	12.9 m <sup>2</sup>	80 m <sup>2</sup>	32.8 m <sup>2</sup>	2.41 m	-	South, East	-	Sold
1090	03	For sale	Condominium apartment	4.5	3	2	1st floor	108.9 m <sup>2</sup>	151.6 m <sup>2</sup>	13.1 m <sup>2</sup>	-	24.6 m <sup>2</sup>	2.45 m	-	North, West	-	Sold
1090	04	For sale	Condominium apartment	2.5	1	1	1st floor	70.1 m <sup>2</sup>	99 m <sup>2</sup>	12.9 m <sup>2</sup>	-	12.5 m <sup>2</sup>	2.45 m	not included   CHF 40,000.-	South	CHF 725,000.-	For sale
1090	05	For sale	Condominium apartment	3.5	2	2	1st floor	91.5 m <sup>2</sup>	133.5 m <sup>2</sup>	12.9 m <sup>2</sup>	-	24.3 m <sup>2</sup>	2.45 m	-	North, East	-	Sold

# Contact

## Wymobilien, Marcel Wyss

Hauptstrasse 13  
3422 Kirchberg / Langnau

Phone: 034 511 20 25  
info@wymobilien.ch  
www.wymobilien.ch

## Contact visit

**Mr. Marcel Wyss**  
info@wymobilien.ch  
Phone: 034 511 20 25  
Mob.: 079 545 62 76



# Notes

---

---

---

---

---

---

---

---